

## > CORONAL SEAL

SEP  
2010

Coronal seal is the protection we provide to prevent contamination of the root canal system after root canal therapy. Typically a post-operative build-up or post and core provide the coronal seal. A full coverage crown follows next and compliments the seal of the core restoration.

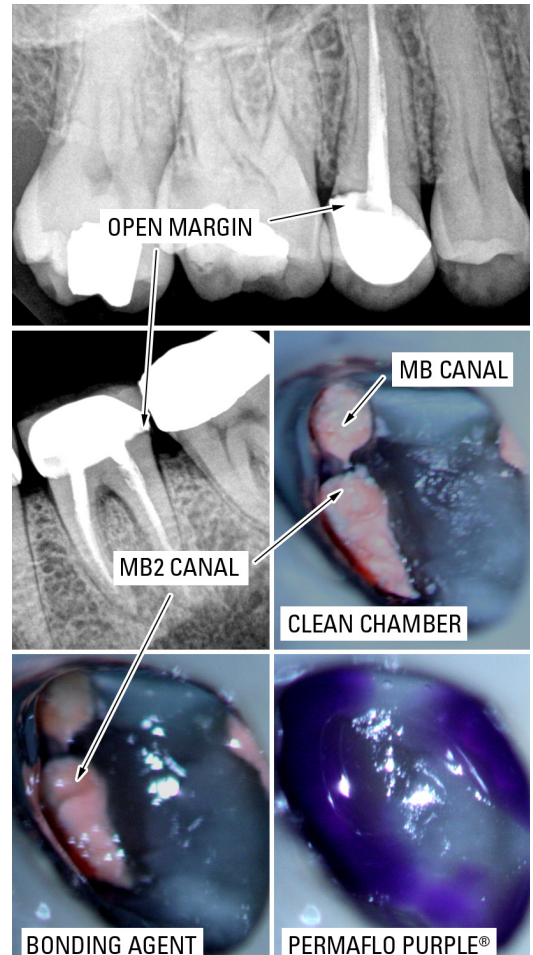
However, when there is a lack of coronal seal, as displayed above, the canals are quickly contaminated. This produces symptoms the patient may relay as, "It just doesn't feel right," or "It aches from time to time." In addition, the changes in the bone evidenced on a PA, or clinical signs such as swelling or a sinus tract can develop. Such teeth emanate a distinct odour when the chamber and canals are accessed.

You may notice in cases sent back to your office, we provide an extra layer of protection for your patients. If not doing the final restoration, an 'orifice barrier' of flowable composite is often placed in the in the coronal portion of the canals. Permaflo Purple® is a flowable composite that is readily visible like the pink of gutta percha or Resilon®. The core build-up can be placed directly over orifice-barrier composite. If a post space is requested, the flowable composite will not be placed in the specified canal.

Regards,



Dr. Joel N. Fransen  
BSc(OT), DMD, FRCD(C)  
Certified Specialist in Endodontics



**Richmond Endodontic Centre**  
Dr. Joel N. Fransen

**110-11300 No.5 Rd**  
Richmond, BC V7A 5J7  
office@endodonticcentre.com  
T 604.274.3499  
F 604.274.3477

### Office Hours

8am to 5pm - Monday to Saturday  
Extended hours are also available

This newsletter and all of the previous newsletters are posted on our Facebook page 'RICHMOND ENDODONTIC CENTRE' and will be available on the updated web page (coming soon) at [www.endodonticcentre.com](http://www.endodonticcentre.com).

If you have any questions about this or other newsletters please contact our office.