



RICHMOND
ENDODONTIC CENTRE

JAN 2011 | NEWSLETTER

ORIFICE BARRIERS

Happy New Year! By popular demand, this month's newsletter provides more information about orifice barriers. Please contact us if there is a specific topic you want covered in a future newsletter.

Successful endodontic treatment requires a coronal seal to prevent re-contamination of the canal system. The best time to place the permanent restoration is immediately after obturation; while the tooth is still isolated under a rubber dam.

However, this is not always practicable and a temporary restoration is placed in the access cavity. Recontamination of such teeth can occur if:

- 1) Placement of the permanent restoration is delayed (> 2 weeks);
- 2) The temporary filling or crown breaks down;
- 3) The surrounding tooth structure fractures; or
- 4) No rubber dam isolation during placement of the permanent restoration.

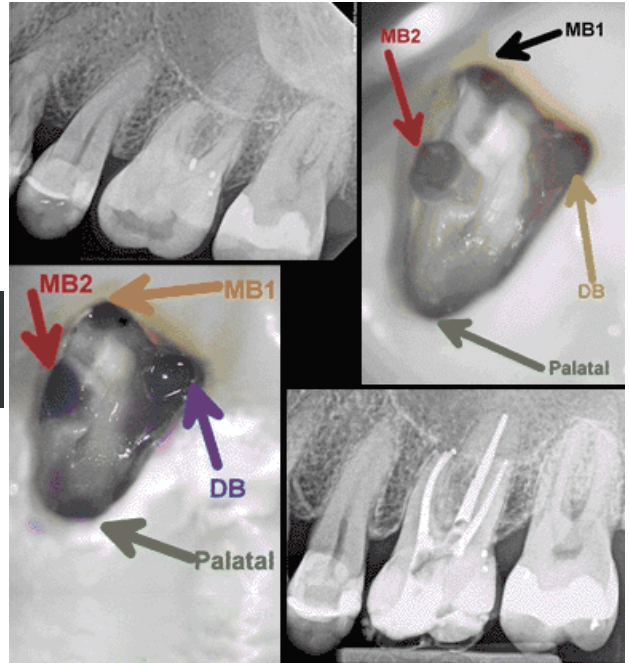
Thus, an immediate line of defence against coronal leakage is a worthwhile endeavour and can be achieved with a canal orifice barrier. Typically, a bonded restorative material is placed in the coronal 2-4mm of the canal. At the Richmond Endodontic Centre, PermaFlo® Purple is used for posterior teeth. In the event a post-space preparation is necessary, the purple colour allows for easy visualisation and removal. A foam pellet is then placed in the chamber with a temporary restoration in the access.

The two goals of a canal orifice barrier are to prevent the ingress of microbes and compliment the final restoration of the tooth. Thank you for your trust and the privilege of being included in the treatment of your valued patients.

Regards,

Dr. Joel N. Fransen, BSc(OT), DMD, FRCD(C)
Certified Specialist in Endodontics

Dr. Garrick Liang, BSc, DMD, FRCD(C)
Certified Specialist in Endodontics



Richmond Endodontic Centre

Dr. Joel N. Fransen
Dr. Garrick Liang

110-11300 No.5 Rd
Richmond, BC V7A 5J7 | MAP
office@endodonticcentre.com
T 604.274.3499
F 604.274.3477

Office Hours

8am to 5pm - Monday to Saturday
Extended hours are also available

This newsletter and all of the previous newsletters are posted on our Facebook page 'RICHMOND ENDODONTIC CENTRE' and will be available on the updated web page (coming soon) at www.endodonticcentre.com. If you have any questions about this or other newsletters please contact our office. Richmond Endodontic Centre will be providing emergency coverage over the coming holiday season.

www.endodonticcentre.com