



SEPARATED FILES NOT ON YOUR SANTA LIST?

DEC
2011

Anyone who claims to have never separated a file in a canal is either new to endodontics or is in a state of ignorant bliss. A broken instrument refers to any piece of equipment/material that becomes lodged in a canal; a separated file is either a hand or rotary file. A number of factors affect the possible prognosis if a file cannot be removed or by-passed:

- Pre-op diagnosis -vital > necrotic > retreatment > lesion/symptomatic
- Time of fracture –near the end > beginning of cleaning and shaping
- Is the file at length > mid-canal > extruded

The prognosis for the tooth remains excellent if the file can be removed or by-passed without ‘hogging out’ the root. A referral to an endodontist is necessary if the file cannot be removed or by-passed. The following are two such cases referred to the Richmond Endodontic Centre:

- **Tooth 23** –A 35/02 and a second smaller file are lodged in a necrotic and symptomatic tooth. The radicular access to the files was improved by forming a staging platform with modified Gates-Glidden burs. The 35/02 file remained tight in the canal and I had to trough with ultra-sonics over 15mm into the canal. Eventually the remaining file fragment loosened and was removed. Frequent and copious irrigation is necessary when troughing to ensure the surrounding bone is not over heated. With the file removed the endodontic treatment of the 27mm canal was completed.
- **Tooth 37** –A 10/02 hand file is tightly lodged and at length; it broke a number of times during troughing with ultrasonics. Eventually the file was removed. Recently a one year post-op evaluation was performed. The lesion is healing; the tooth is fully restored, asymptomatic, and functional.

Endodontic microsurgery could be considered if the file in either case was not removed or by-passed. There are circumstances when it is reasonable to leave a separated instrument in a canal; please consult with an endodontist beforehand.

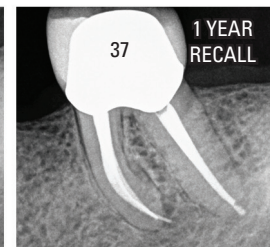
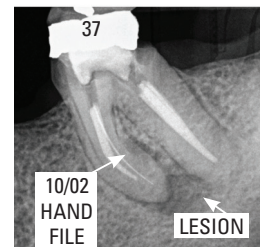
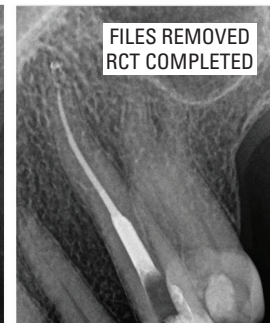
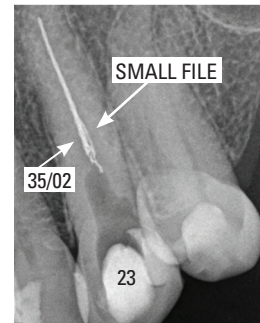
If you do enough endo you will separate instruments and files. It is an unfortunate event, not malpractice. The prognosis for a tooth is not necessarily worsened by such incidents. There is a lot to be done before considering an extraction.

I hope you enjoy these newsletter and I welcome your comments, suggestions, and questions. I wish all of you the best over the holiday season as well as a Happy Christmas. Bring on 2012!

Regards,



Dr. Joel N. Fransen
BSc(OT), DMD, FRCD(C)
Certified Specialist in Endodontics



Richmond Endodontic Centre
Dr. Joel N. Fransen

110-11300 No.5 Rd
Richmond, BC V7A 5J7
office@endodonticcentre.com
T 604.274.3499
F 604.274.3477

Office Hours

8am to 5pm - Monday to Saturday
Extended hours are also available

‘This newsletter and all of the previous newsletters are posted on our Facebook page “RICHMOND ENDODONTIC CENTRE”, the BCDA members blog, as well as the soon to be completed web page at www.endodonticcentre.com.

Emergency coverage is available over the **holidays**. Please call our office for more details.