

With snow and ice arriving, the chance of trauma to immature maxillary anteriors is highly likely. Thus, this month's newsletter addresses the Cvek pulpotomy procedure. A traditional pulpotomy is a temporary solution; it involves removal of the coronal pulp to the floor of the chamber and is followed by a pulpectomy and endodontic treatment. In comparison, a Cvek pulpotomy or partial pulpotomy involves removal of 2mm of the pulp adjacent to the exposure. Its goal is to maintain pulp vitality indefinitely and allow root development to continue.

A Cvek pulpotomy is indicated on immature incisors, with vital pulps, that have endured a complicated crown fracture. The smaller the size of the pulp exposure (1-2mm) and the shorter the time elapsed since the injury the greater likelihood of the pulp remaining healthy and vital.

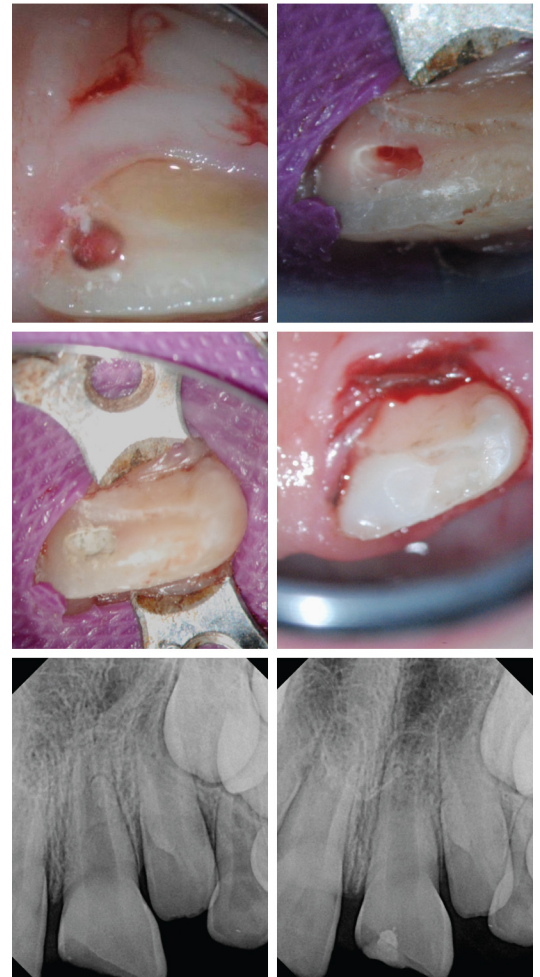
The Cvek Pulpotomy Technique

1. Remove the pulp tissue 2mm apical to the exposure with a high speed diamond bur under water
2. Control haemorrhage with saline or diluted sodium hypochlorite(2.5%) soaked foam/cotton pellet
3. Cover the pulp with a layer of MTA or calcium hydroxide
4. Seal with a layer of glass ionomer and restore the tooth
5. Re-evaluate in one month and then once every 3 months for the first year to monitor vitality and root development

Regards,



Dr. Joel N. Fransen
BSc(OT), DMD, FRCD(C)
Certified Specialist in Endodontics



Richmond Endodontic Centre
Dr. Joel N. Fransen

110-11300 No.5 Rd
Richmond, BC V7A 5J7
office@endodonticcentre.com
T 604.274.3499
F 604.274.3477

Office Hours

8am to 5pm - Monday to Saturday
Extended hours are also available

This newsletter and all of the previous newsletters are posted on our Facebook page 'RICHMOND ENDODONTIC CENTRE' and will be available on the updated web page (coming soon) at www.endodonticcentre.com.

If you have any questions about this or other newsletters please contact our office.